

NLB ATL-3000

Automated Tube Lancing Machine



The NLB Automated Tube Lancer is a safe and effective tool for water-jet cleaning of internal heat exchanger tubes. The unit differs from other tube lancing units in that it can operate in a space much smaller than the actual length of the bundle to be cleaned.

The ATL is easily positioned by forklift, and can be operated by one operator. Because it is light and compact, the ATL can easily be transported on a trailer or small truck. It is easy to operate and commercially attractive for even the smallest heat exchanger cleaning jobs. The tube lancer incorporates an air powered reel which pushes as many as three flexible lances with 202 lbs. of force (92 kg) into the tubes.

TECHNICAL DATA – Horizontal

Pressure & Volume Ratings

- Maximum 15,000 psi (1000 bar) water pressure
- Flows from 5-30 gpm (20-110 lpm) depending on type of nozzles and flexible lance size used. Standard 1/2" high-pressure water supply hose adapts to the high-pressure rotating swivel.

Mechanical Drives & Safety

- Air drive, 90 psi (6 bar)
- Drive systems provided with adjustable friction couplings and are protected from the harsh environment.

Controls

- Manual – one operator on platform. The control platform moves laterally and vertically, with the reel unit to allow maximum visibility for the operator at all times.
- Remote Control – The operator moves freely and can choose his preferred working spot.

Flex Lances

- Pitch (2 or 3 lances): adjustable to the pitch of the tubes.
- Lateral Range: 5.75 feet (1.75 meter); max. diameter of bundle that can be cleaned, without changing the position of the machine.
- Lance Speed: adjustable between 1 and 4 ft. per second. (0.3 and 1.50 m per second)
- Length of Stroke: adjustable between 0 and 29 ft. (0 and 9 m) depending on the length of the bundle to be cleaned. By presetting the stroke to the length of each bundle, the machine will automatically stop after the nozzle has passed through the far end tube sheet.
- Lance Dimensions: standard set of 3 lances: lance O.D. 0.355" (9 mm). Optional 2 lances: lance O.D. 0.51" (13 mm). Special power reel for 1 lance, if larger I.D. is required.

Weight & Dimensions

- 1500 lbs. (680 kg)
- L x W x H: 6.5 x 8.25 x 9 feet (2 x 2.50 x 2.75 meters)

All Units Are Factory Tested Before Shipment



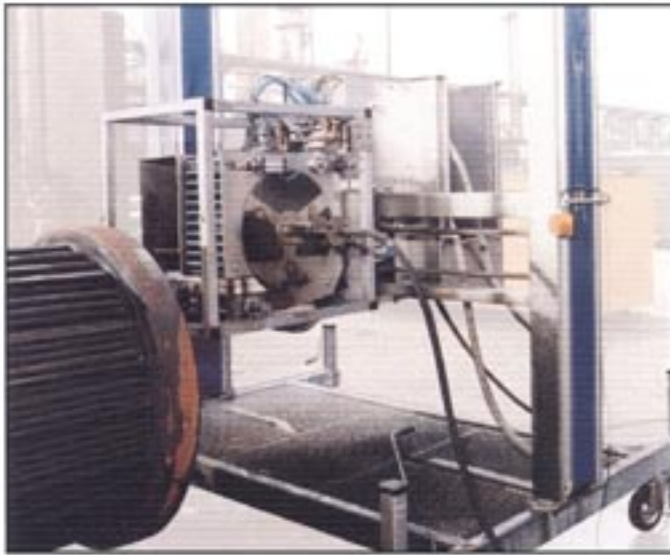
The Leader in High-Pressure Water Jet Technology

ATL-3000 Tube Lancer



Model No. ATL-3000 Automated Tube Lancing Machine

The compact, flexible ATL-3000 can be set-up and run by one operator and is easier to use than other rigid lance tube lancing machines. Its versatile design is perfect for horizontal tube cleaning, but it may also be inverted for vertical tube lancing applications.



Advantages of ATL-3000

- Cleans bent heat-exchanger tubes (hairpin bundles)
- Minimum installation time
- Eliminates manual operation
- Remote control pendant helps reduce operator exposure
- Uniform movement ensures effective cleaning of tube sides
- Suitable for explosion-proof environments

Safe – Eliminates manual operation of flex lances. Operator's no longer in contact with high-pressure hoses. Exposure to contamination and debris exiting from the tubes is greatly reduced.

Effective – Since flex lances are mechanically pushed into the tubes, cleaning power is directed at cleaning the tubes – no water pressure is needed for the propulsion of the flex lances.

Versatile – Up to three flex lances in use in one operation. Because it is compact, the ATL can be used on a cleaning slab, installed on scaffolding or permanently installed on-site.

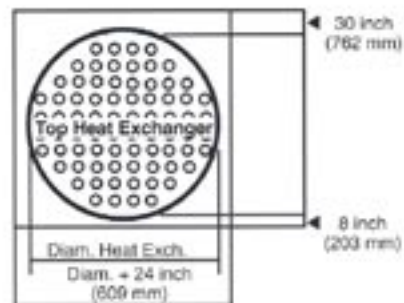
Efficient – Tests show that on average, at least three times as many tubes can be cleaned in comparison to conventional methods. Speed control assures consistent quality cleaning at productive cleaning rates.

Vertical

The NLB ATL-3000V, configured for vertical tube cleaning, operates in the same manner as does the horizontal version. The mechanical drive and control system specifications remain the same (see reverse). Additionally, pressure and flow parameters, along with flex lance data, are identical. Items changed are:

Weight & Dimensions

- 330 lbs. (150 kg)
- L x W x H: 37 x 27 x 49 inch (940 x 680 x 1240 mm)



The Leader in High-Pressure
Water Jet Technology

Headquarters:
29830 Beck Road
Wixom, MI 48393-2824
(248) 624-5555
FAX: (248) 624-0908
<http://www.nlbcorp.com>

UK Distributor:
■ Doornbos Equipment UK Ltd
Unit 5, Tower Lane Indust Estate
Tower Lane, Eastliegh
■ Hants SO50 6NZ
United Kingdom

■ Tel: +44 (0) 2380 643388
■ Fax: +44 (0) 2380 643399
■ Email: sales@doornbosequipment.co.uk
■ Website: www.doornbosequipment.co.uk