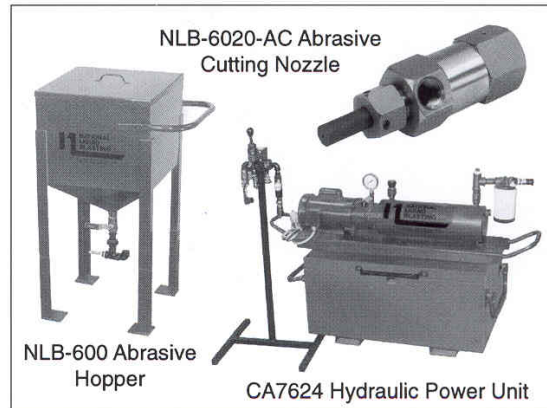
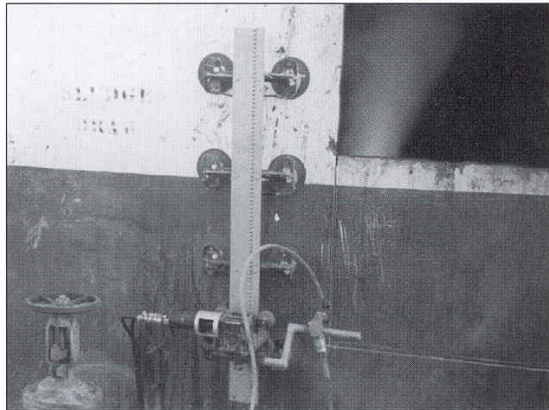




Unit 5, Tower Industrial Estate, Eastleigh, Hampshire, SO50 6NZ, England  
Tel: +44 (0) 23 8064 3388 Fax: +44 (0) 23 8064 3399  
VAT #GB 777 3119 07

## NLB Abrasive Track Crawler Cutting System



The NLB Model ATS-1 is a nozzle tracking device for high pressure water jet abrasive cutting applications which require straight or curved cuts on a steel or concrete surface. The crawler is driven by a hydraulic motor, and pulls itself along a stainless steel track with a sprocket which rides along pins welded to the guide track. The track sections are held to the cutting surface (i.e. a steel plate) with heavy duty pneumatic suction cups.

The light weight crawler mechanism is designed so that the track can be mounted perpendicular or parallel to the cutting surface.

The track is four feet long and is supported by heavy duty brackets. Two different track sections are available. One section allows cuts from a straight line to a radius arc of three feet. The other track will cut a radius of four feet down to four inches.

The crawler is driven by a hydraulic motor. Hydraulic power comes from a compact power unit powered by a one half horsepower, 110 volt electric motor. The unit includes the electric motor, oil pump, tank, filter, relief valve and two gauges, all mounted on a lightweight steel base.

As with the NLB 20K-APC-1 abrasive pipe cutting system, the ATS-1 requires the NLB 6020-AC abrasive cutting nozzle with either a NLB 300-AC or NLB 600-AC gravity feed abrasive hopper. A pressurized hopper is also available.

The system requires an NLB 20,000 psi (2,070 bar) pumping system which are available from 100 to 600 hp (75 to 450 kw) in both diesel and electric models. A 36,000 psi (2,500 bar) abrasive cutting system is also available with the NLB7790 Ultra-High pressure abrasive nozzle

**For Further Information Contact:**

**Email: [sales@doornbosequipment.co.uk](mailto:sales@doornbosequipment.co.uk)**

